

VISIONING & VALUE

Vision Statement

- Where do we see ourselves in five years?

Values

- What values will support us through the MAPP process?

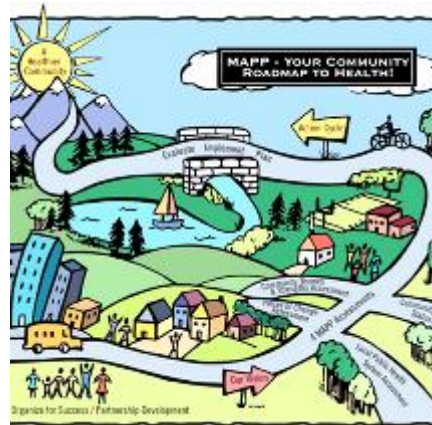
Community Health Improvement Plan

- How do we plan to get there?





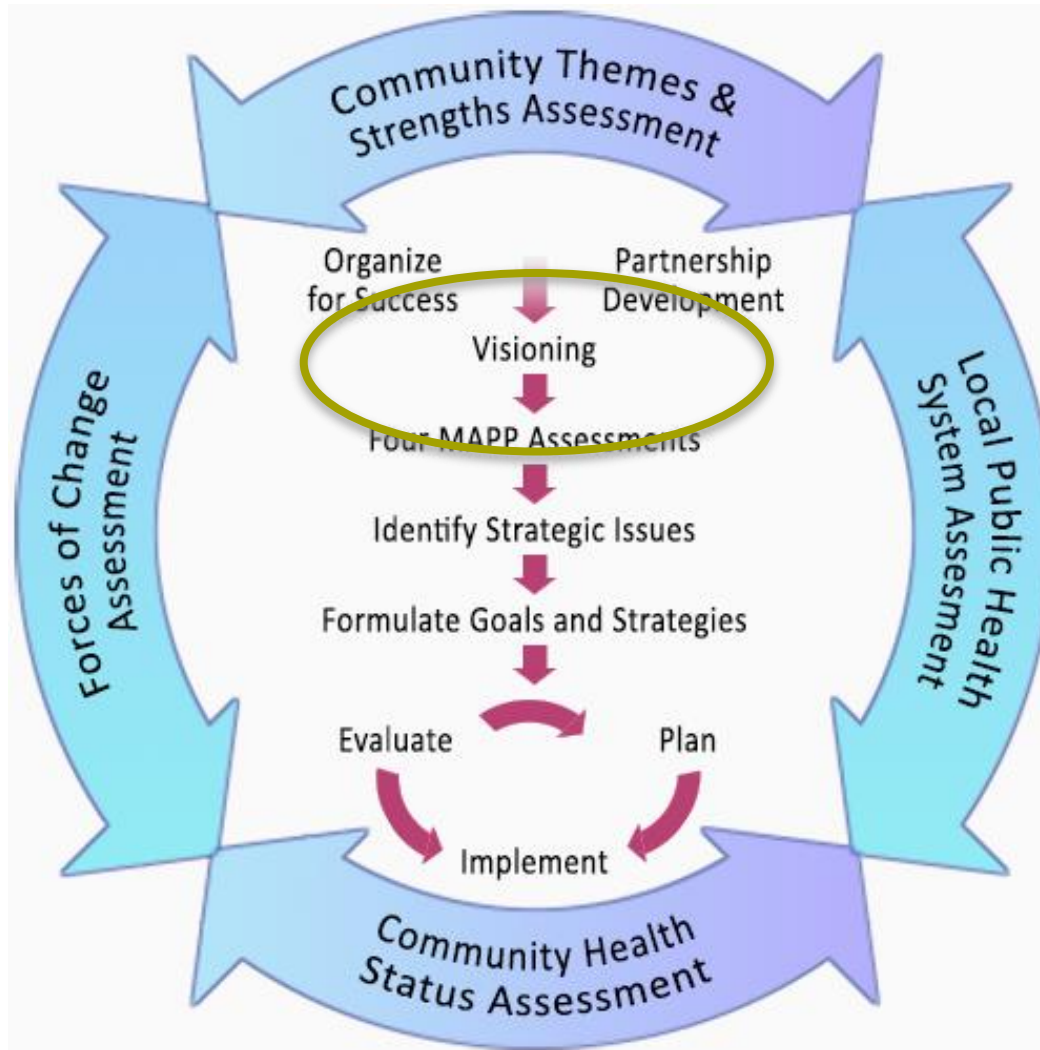
Mobilizing for Action through Planning & Partnerships

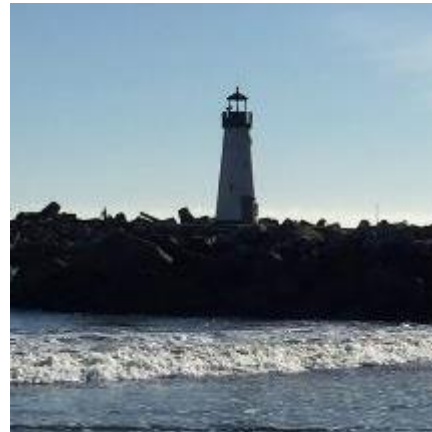


MAPP Tool

Phase 2: Visioning

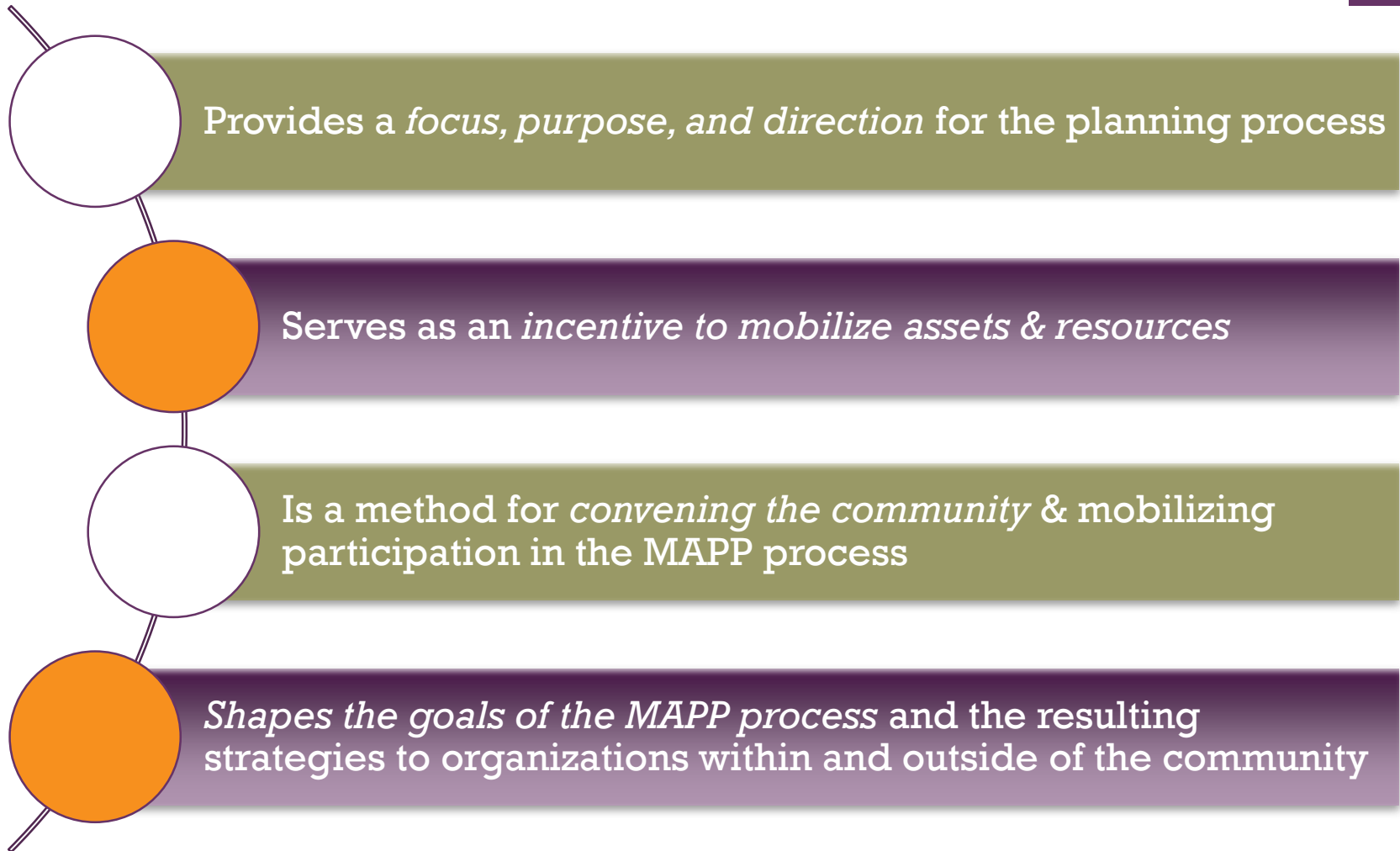
+ MAPP OVERVIEW





**A vision is a picture of the future
you wish to create**

+ Why visioning is important



+ Other Visioning Efforts throughout the County

- These should be considered to assure alignment with other countywide efforts
- See list in your packet of information



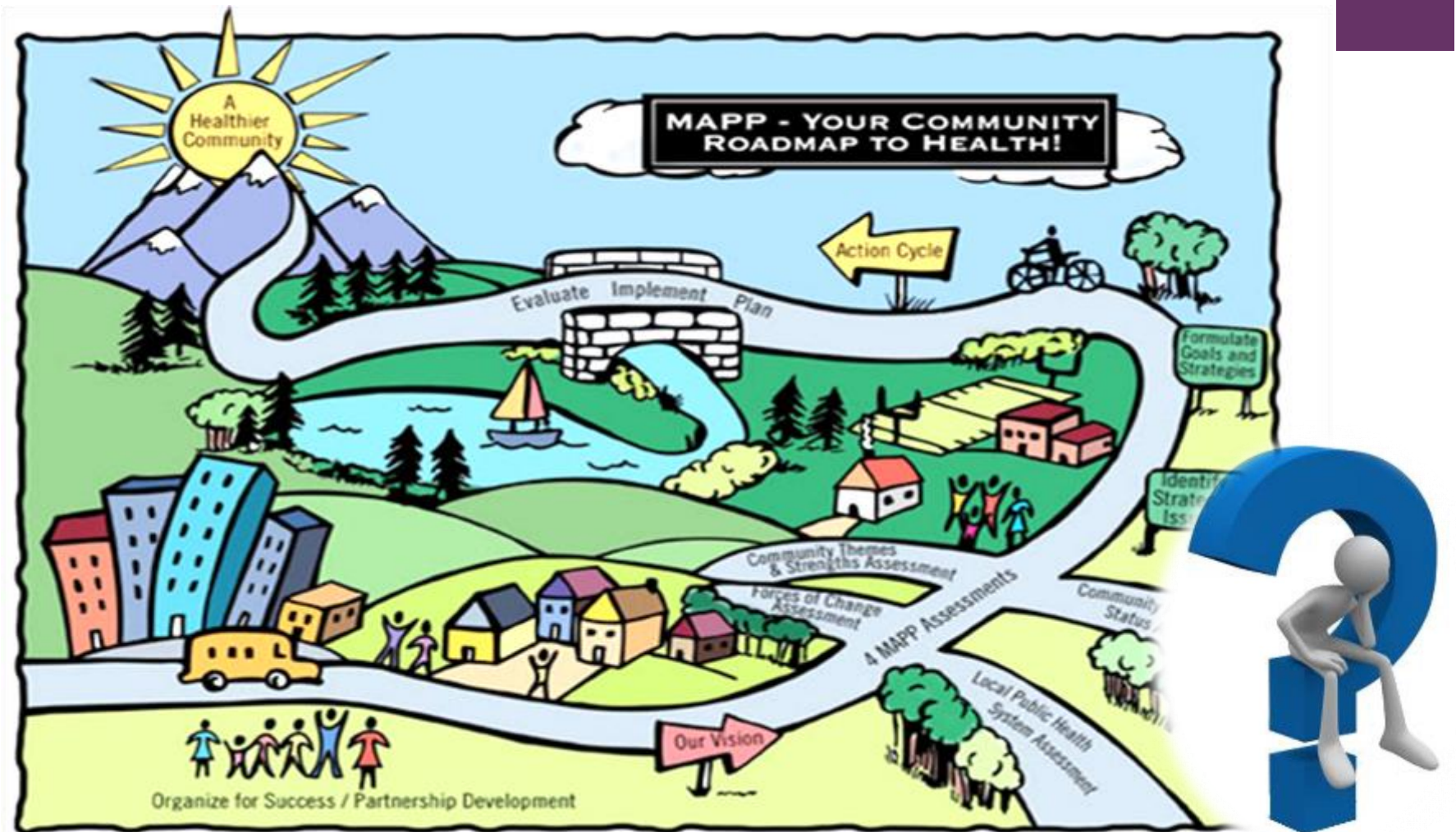
+ Vision Questions

What does a healthy community mean to you?


What are important characteristics of a healthy community for all who work, learn, live and play here?

Five years from now, what would we want the local newspaper to say about the health of our community?

In your ideal community, what would you hear, see, taste, touch and smell?



Small Group Review – Elements of a Healthy Santa Cruz County

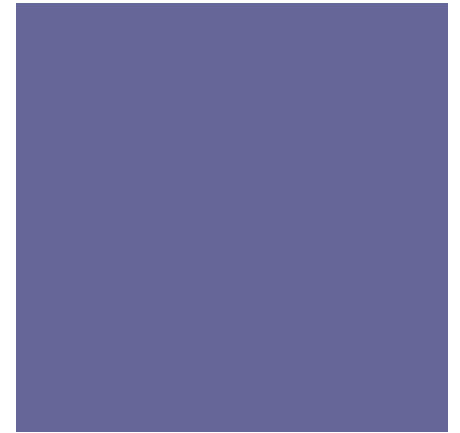


+ Where do we, as a
community, see ourselves
in three to five years?

Create your vision in small
groups



Groups Share



+ Choose Vision Statement(s)



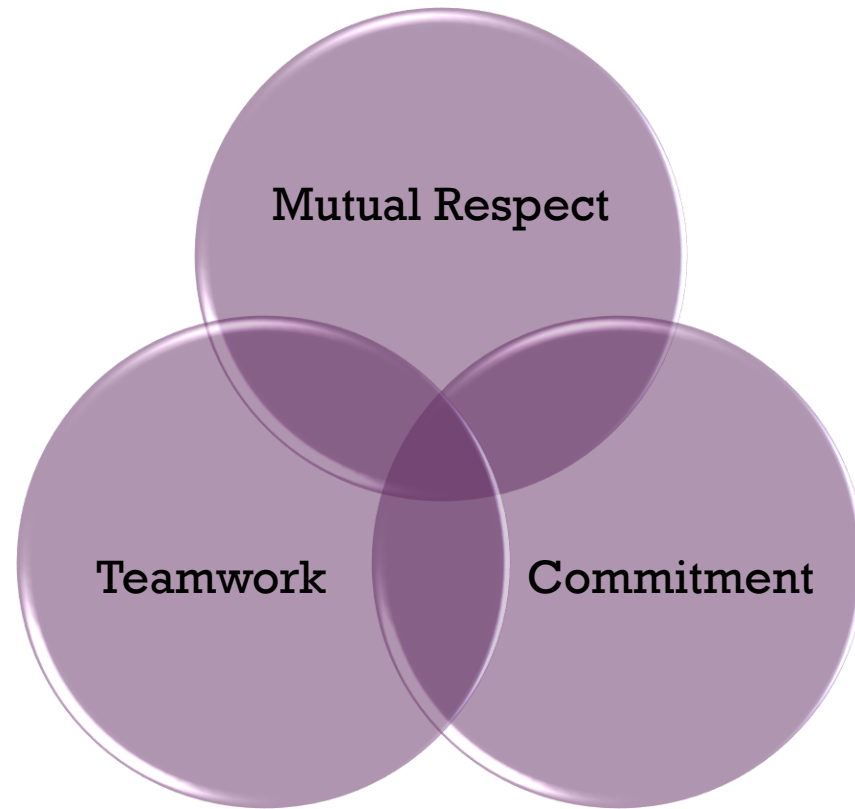
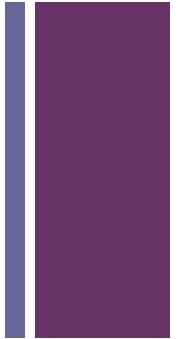
Responsibility

Respect

Community

Excellence

Community Values



Fundamental principles & beliefs that guide a community-driven process

+ Group Values Discussion



What needs to be in place for us to work together effectively to achieve our vision?

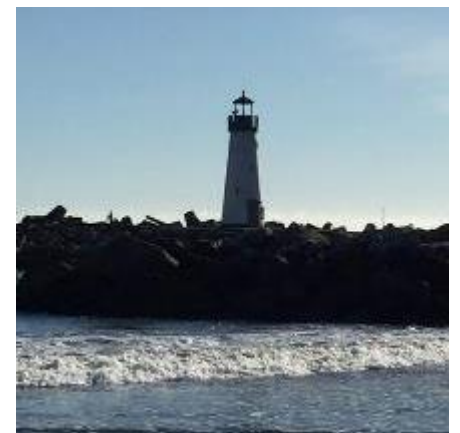
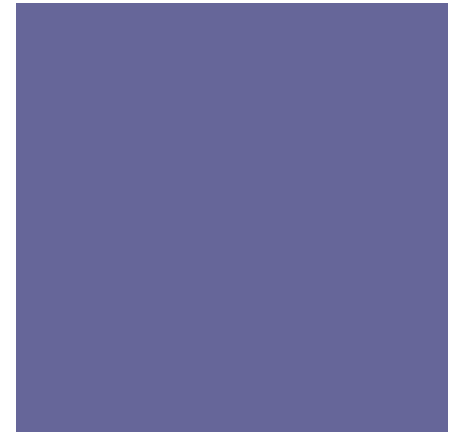
What type of working environment is necessary for our partnership to achieve its vision?



What are some ground rules we want to set to ensure we are all working effectively to achieve our vision?



Groups Share Values and Vote for Top Five



+

Next Steps

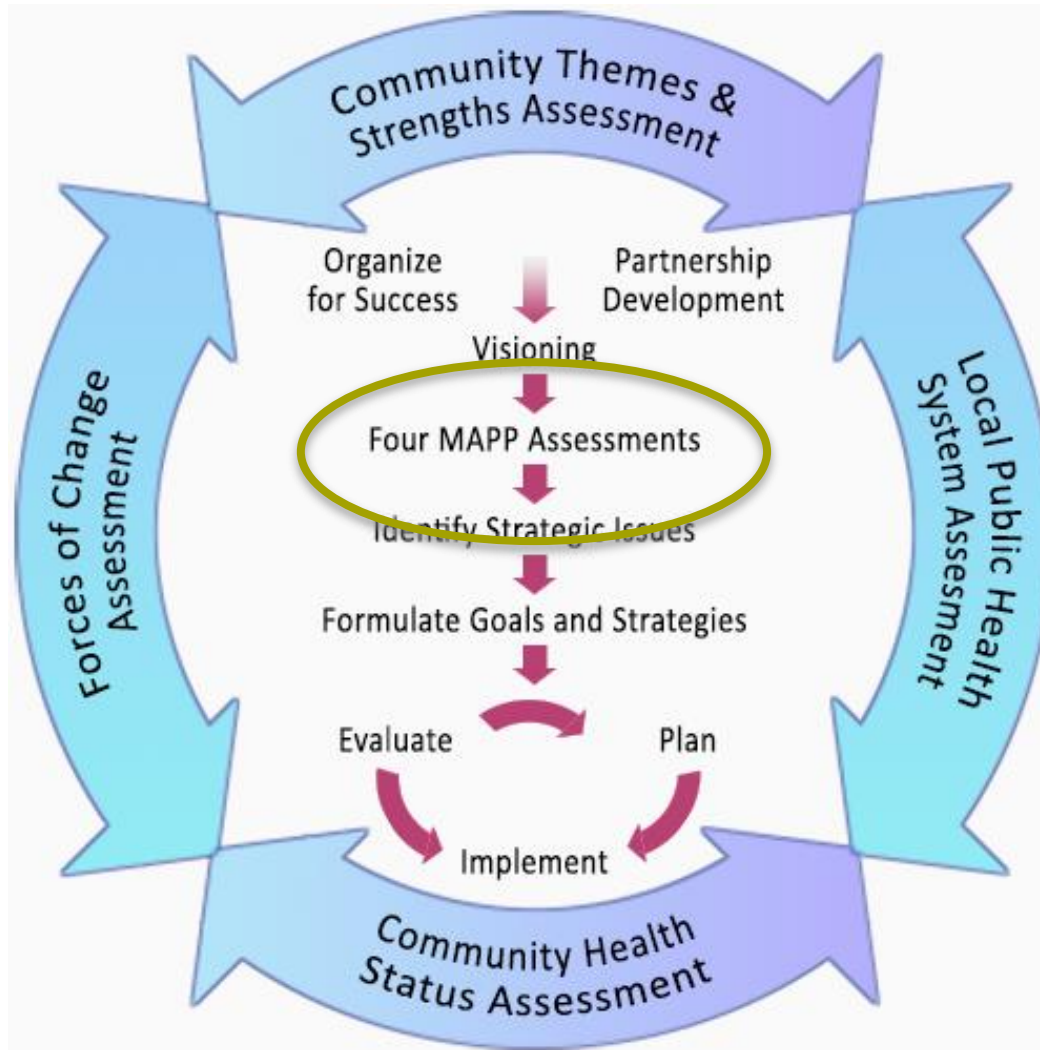


+ Upcoming Meetings



- December 2, 2015 – MAPP Steering Committee
 - Forces of Change Assessment
- December 3, 2015 – Community Health Status Assessment
 - Review, identify, and select indicators that will be used to track progress toward the vision

+ MAPP OVERVIEW



THANK YOU

