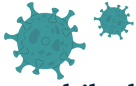


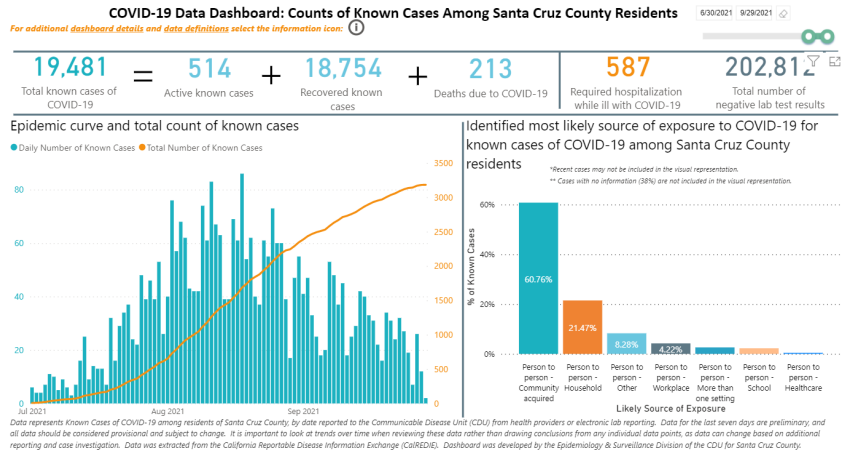
Santa Cruz County Public Health COVID-19 Emergency Response Executive Summary 10/1/2021



COVID-19 Case Trends – Stabilizing Trends

While the COVID-19 Delta Variant continues to be active in the Santa Cruz County community and throughout the country, overall cases continue to decrease.

- As of 9/29/21, data shows a -26% change in average number of cases in the last 14 days, compared to 2 weeks ago when it was at a -34% change in cases.
- Since 7/1/21, the most likely source of exposure is person-to-person community acquired (60.76% of known cases). The second highest source of exposure is person-to-person household acquired (21.47% of known cases).
- The Local Demographics Dashboard shows that the highest active cases are among the 25-34 age group (16%), followed by the 35-44 age group (13%).
- Santa Cruz County moved to Moderate "yellow" Transmission Level, ending Local Health Officer Order for Indoor Face Coverings. Face Coverings are still strongly recommended in public settings.



Vaccinations

On Friday (9/24), the Centers for Disease Control (CDC) made a recommendation for booster doses of Pfizer-BioNTech 6 months after completion of primary series for the following populations:

- Individuals 65+ or residents in Long Term Care Facilities and individuals 50-64 with underlying medical conditions should receive a booster.
- Individuals 18-49 with underlying medical conditions and individuals who are at occupational or institutional risk of COVID-19 exposure or transmission **may** receive a booster.

Upcoming Vaccine Opportunities

- **October 5th** - Dream Inn | 2-5pm
- **October 7th-10th** - Watsonville Vaccine Center | 9am-1pm (Thurs/Sat) and 2-6pm (Fri/Sun)
- **October 8th** - Watsonville Farmer's Market | 2:30-6:30pm

Visit the [COVID-19 Vaccine Resource](#) webpage or [My Turn](#) for vaccination opportunities and appointments.



Testing

Looking for COVID-19 Testing? Find an appointment at [OptumServe](#), [medical providers](#), and [Urgent Care](#) locations.

- Appointments continue to be available at all three OptumServe testing locations in Watsonville, Santa Cruz, and Felton.
- County Office of Education supports COVID-19 testing for the school community. Additional information [here](#).



Recent State Health Officer Orders

- [State and Local Correctional Facilities/Detention Centers Health Care Worker Vaccination Requirement](#) - in effect 8/19/21, complete full dosage regimen by 10/14/21
- [Vaccine Verification for Workers in Schools](#) - in effect 8/12/21, full compliance by 10/15/21
- [Health Care Worker Vaccine Requirement](#) - in effect 8/5/21, full compliance by 9/30/21
- [Adult Care Facilities and Direct Care Worker Vaccine Requirement](#) - in effect 9/28, full compliance by 11/30

Public Health Reminders

- [Health Equity](#) continues to be a value of our local COVID-19 response. [Explore resources](#) on how to talk about addressing health disparities.
- If you are symptomatic, please get tested and stay home. It is crucial to reducing the spread and to **protecting loved ones**.
- **Seasonal Influenza** season is here. Now is the time to get the flu shot from your healthcare provider or local pharmacy. Visit [MyTurn](#) for appts.

